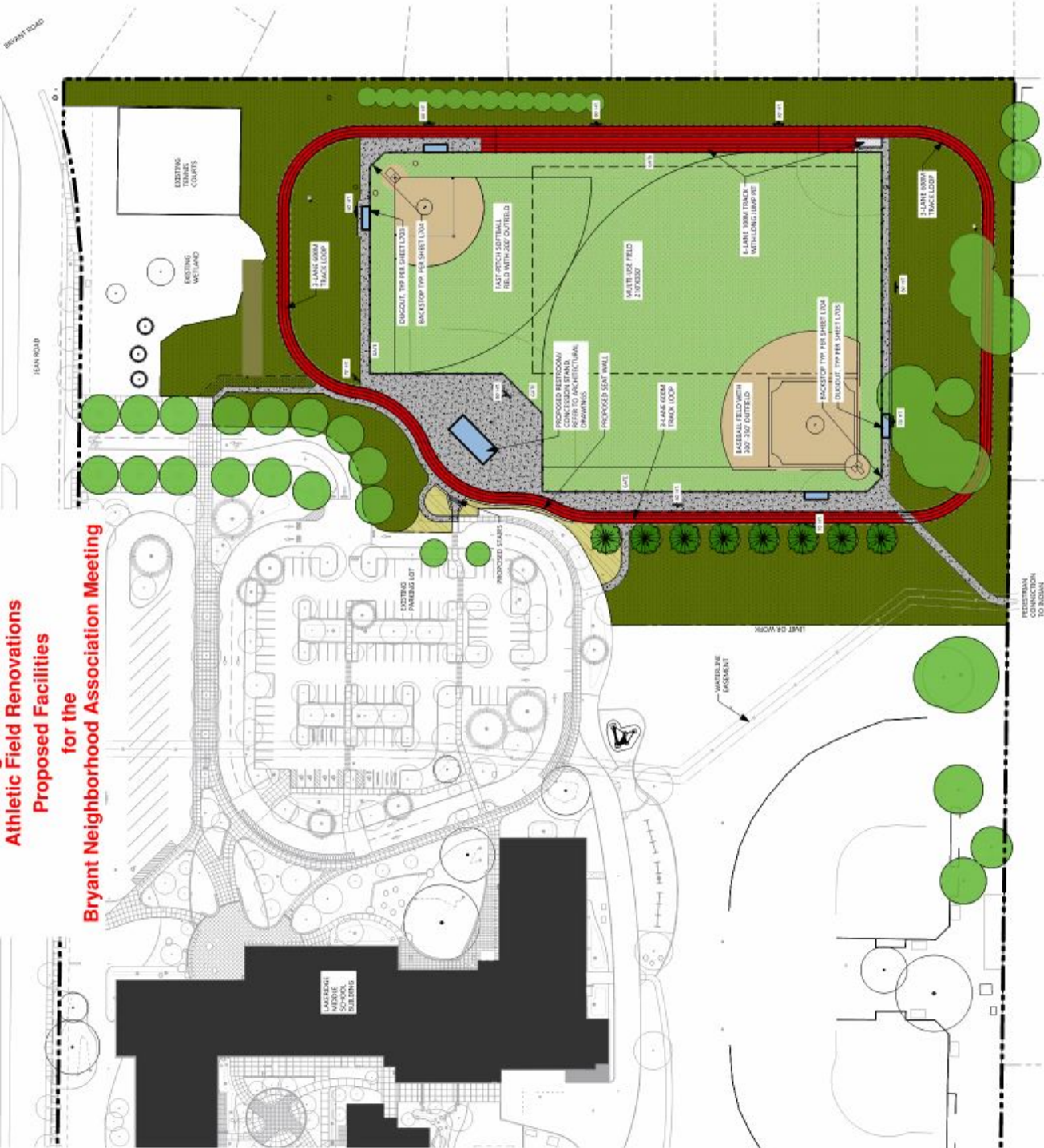


**Lakeridge Middle School
 Athletic Field Renovations
 Proposed Facilities
 for the
 Bryant Neighborhood Association Meeting**



1 SITE PLAN
 1" = 40'-0"

- NOTES**
1. SURVEY INFORMATION PROVIDED BY:
 2. VERIFY EXISTING LOCATIONS AND BOUNDING OF EXISTING UNDERGROUND UTILITIES AND RECORD THEM AS SHOWN ON THE DRAWING. CONTRACTOR TO VERIFY ALL UTILITIES AND RECORD THEM AS SHOWN ON THE DRAWING. CONTRACTOR TO VERIFY ALL UTILITIES AND RECORD THEM AS SHOWN ON THE DRAWING.
 3. EXISTING UTILITIES OR RELATED FACILITIES AT CONTRACTOR'S RISK TO MAINTAIN APPROVED BY OWNER'S REPRESENTATIVE.
 4. EXISTING UTILITIES OR RELATED FACILITIES AT CONTRACTOR'S RISK TO MAINTAIN APPROVED BY OWNER'S REPRESENTATIVE.
 5. ALL ACCESSIBLE COMPONENTS INCLUDING BUT NOT LIMITED TO DECKS, WALKWAYS, AND STAIRS SHALL BE CONSTRUCTED TO MEET THE 2010 AMERICAN WITH DISABILITIES ACT AND ALL APPLICABLE STATE STANDARDS TO PARKING AND ACCESS FOR THE DESCRIBED USES.
 6. REFER TO CIVIL AND ELECTRICAL DRAWINGS FOR UTILITIES.

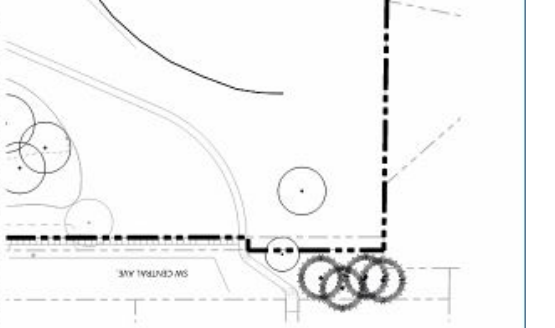
LEGEND

	PROPERTY LINE
	LIMIT OF WORK
	PROPOSED OR VINYL CONCRETE PAVING (S1 L001 SF)
	PROPOSED ATHLETIC FIELD (168,288 SF)
	SYNTHETIC TURF (168,288 SF)
	LAWN SEEDING (168,288 SF)
	PLANT BED (13,011 SF)
	CONCRETE PAVING (S1 L001 SF)
	EXISTING TREES
	PROPOSED TREES

SITE DATA TABLE

TOTAL SITE AREA (TRA L01 R01 R0100X)	1,253,264 SF (28.77 AC)
TOTAL PROPOSED OPEN SPACE (including all proposed trees)	600K SF (13.8%)
PROPOSED SITE LANDSCAPE	395,125 SF
PROPOSED SITE OPEN SPACE	173,170 SF
SYNTHETIC TURF FIELD, TRACK AND PAVEMENT (including all proposed trees)	220,118 SF
EXISTING AREA	18,001 SF

*Prior to development, the project work area will 100% landscape/open space



Slide - Field Land Use Project

PA-21-0091

12/2/21

School District Land Use Project / Development Review Permit

Construct an artificial turf field, running track, and a restroom & concession building, renovate lighting, at LRMS

a) Map

b) Schedule

c) Summarize Issues

d) Introduction Tony Vandenberg - Executive Director of Project Management with the school district

Slide - Field Land Use Project

PA-21-0091

12/2/21

School District Land Use Project / Development Review Permit

Construct an artificial turf field, running track, and a restroom & concession building, renovate lighting, at LRMS

a) Map

b) Schedule

c) Summarize Issues

d) Introduction Tony Vandenberg - Executive Director of Project Management with the school district